

ICD-485ETH (MODBUS GATEWAY)



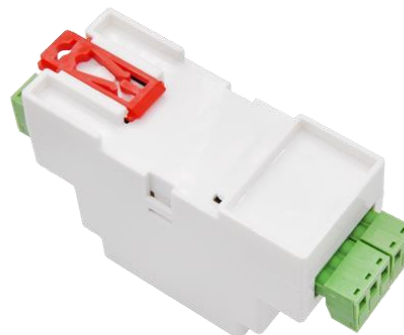
- Support Modbus RTU to Modbus TCP
- Input Voltage: 9~24 VDC
- RS485 can drive 32 load



INDUSTRIAL GRADE



YEARS WARRANTY





FEATURES:

- Support Modbus gateway function, support Modbus RTU to Modbus TCP
- Support for multiple hosts
- Support for custom heartbeat and registration package features
- Support "transcoding" function
- RS485 can drive 32 load
- Support data submission and sending function in HTTP mode

TECHNICAL PARAMETER:

Interface	485: Terminal
Power Supply	9~24V DC : Terminal
Size	8.7 × 3.6 × 5.9 cm (L x W x H)
Ethernet	10M/100M, 2KV surge protection
Serial	RS485×1: RXD, TXD, GND
Baud rate	1200~115200bps
Parity	None, odd check, even check,
Data	mark, space
bits	5~9
Flow	None
control	
Protocol	ETHERNET, IP, TCP, UDP, HTTP,
Setting	ARP, ICMP,
method	WEB browser, device
Net communication	management library
method	TCP/IP direct communicate,
	Virtual serial
Work Mode	TCP server, TCP client, UDP, Real Com Driver



HARDWARE FEATURES:

- Guide-way design: suitable for internal installation of cabinet in industrial field
- Compact size: relative to the ordinary serial port server, the width is small, does not take up space
- Terminal type power supply, 9~24V wide voltage input, with anti-opposite power connection protection
- Terminal RS485 interface, support 32 slave devices, baud rate support 300 ~ 115200bps
- RS485/422 has capacity of 256 loads
- Abundant panel indicator lights are convenient for debugging

SOFTWARE FEATURES:

- Support TCP server, TCP client, UDP mode, UDP multicast. Support TCP server side function as TCP client. Support 30 TCP connections as a TCP server and 7 destination IP as a TCP client
- The baud rate supports 1200~115200bps, data bits support 5~9 bits, and parity can be None, Odd, Even, Mark, Space. CTS/RTS hardware flow control and XON/XOFF soft flow control.
- Support the function of sending MAC address when device connecting to facilitate cloud management of devices.
- Provide search, configure the device secondary development package DLL on PC.
- Support Web browser configuration, support DHCP dynamic access IP, DNS protocol connect domain name server address.
- Support remote search device, configure device parameter, device program upgrade on cloud.
- Support remote viewing of TCP connection status, serial port data sending and receiving status of devices through software. Virtual serial port supports data monitoring.

ADVANCE SOFTWARE FEATURES:

- Support Modbus gateway function, support Modbus RTU to Modbus TCP. The storage Modbus can be supported, and the equipment data can be collected automatically and stored. Modbus gateway for non-storage mode is also supported.
- Support for multiple hosts: support Ethernet port allows multiple computers to access the same serial port device at the same time in a question-answer query mode.
- Support for MQTT gateway functionality.
- Support JSON to Modbus RTU and 645 meter protocol, support HTTP POST, HTTP GET format upload data.
- Support for NTP protocol to obtain network time for serial output for protocol content.
- Support for custom heartbeat and registration package features: easy to communicate with the cloud and identify device.
- Support the function of TCP needs password authentication to establish connection to ensure connection security.
- Support "transcoding" function, which can realize the translation of protocols for specific devices and allow different devices to connect to the unified software platform.
- Support data submission and sending function in HTTP mode, and the cloud can directly use HTTP GET instructions to interact with the serial port data of the device

CONTACT US

AUTOMATION SYSTEMS AND SOLUTION

T-12, 3rd Floor, Pankaj Central Market, I.P. Extension,

Patparganj, Delhi - 110 092

PH.NO: +91 11 41709077 / 22232187

Email.ID: infoautomation18@gmail.com

Web: www.automationsystem.in